

1) Exit direction 90° connector, 2) Output function, 3) Ultrasonic transducer axis, 4) Operating voltage



**Basic features**

<b>Application</b>	Distance measurement Object detection
<b>Approval/Conformity</b>	cULus CE WEEE UKCA
<b>Operating mode</b>	IO-Link Reflectionlight scanner (switching point) Refl.light scanner (window) Retro-reflector
<b>Series</b>	W18M1

**Electrical connection**

<b>Connection</b>	M12x1-Male, 5-pin
<b>Polarity reversal protected</b>	yes
<b>Short-circuit protection</b>	yes

**Display/Operation**

<b>Adjuster</b>	no
<b>Display</b>	Output function- LED yellow LED green: Power

Ultrasonic Sensors  
**BUS W18M1-GPXI-02/015-S92G-511**  
Order Code: **BUS007K**

**BALLUFF**

### Electrical data

Current draw max.	40 mA
Hysteresis H max.	2 mm
Input function	Select operating mode Factory setting (Reset) Synchronization on/off NO/NC SIO mode/IO-Link mode Teach switching distance, 2 values Synchronization signal
Operating voltage U <sub>b</sub>	10...30 VDC
Output current max.	100 mA
Rated operating voltage U <sub>e</sub> DC	24 V
Switching frequency	25 Hz
Synchronization	internal, max. 10 sensors
Ultrasonic Frequency	380 kHz

### Environmental conditions

Ambient temperature	-25...70 °C
IP rating	IP67
Storage temperature	-40...85 °C

### Functional safety

MTTF (40 °C)	845 a
--------------	-------

### Interface

Interface	IO-Link 1.1
Interface setting option	Switch. point (2x for window) SIO mode/IO-Link mode Measured value filter Hysteresis Filter strength (10 levels) Operating mode Foreground suppression range Normally open/Normally closed Factory setting (Reset)
Process data OUT	Distance value Switching state
Process data cycle min.	8 ms
Switching output	PNP/NPN NO/NC push-pull

### Material

Housing material	Brass, nickel-plated PBT
Material sensing surface	PU foam/Epoxy resin/Glass
Surface protection	nickel-plated

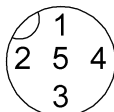
### Mechanical data

Dimension	Ø 18 x 68.4 mm
Mounting part	Nut M18x1

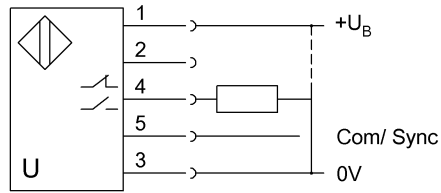
### Range/Distance

Measuring range	25...250 mm
Rated operating distance S <sub>n</sub>	150 mm
Repeat accuracy	± 0.15 %FS
Resolution	≤ 0.069 mm

### Connector Drawings



## Wiring Diagrams



## Technical Drawings

